



Operator's Manual Supplement

Genie® Fall Arrest Bar

Original Instructions
First Edition
Sixth Printing
Part No. 1256390GT

Manufacturer: CE & UKCA

Terex Global GmbH
Bleicheplatz 2
Schaffhausen, 8200
Switzerland

Note: Terex Global GmbH is also known as "Genie" when referenced in this manual.

EU Authorized representative:

Genie Industries B.V.
Boekerman 5
4751 XK OUD GASTEL
The Netherlands

UK Authorized representative:

Genie UK Limited
The Maltings
Wharf Road
Grantham
NG31 6BH
UK

Contact Us:

<https://www.genielift.com/region-selector>

To locate additional Languages available for this supplement:

- Go to <https://www.genielift.com>
<http://www.genielift.com/en/service-support/manuals/index.htm>
- Use the links to locate the Operator's Manuals
- Select your language
- Select supplements

Contents

Introduction	1
Installation Instructions	15
Genie Fall Arrest Bar Inspection Log.....	20
Declaration of Conformity	21

Copyright © 2017 by Terex Corporation

First Edition, Sixth Printing April 2023

Genie, "S" and "Z" are registered trademarks of Terex South Dakota, Inc. in the U.S.A. and many other countries.

This accessory complies with



- EC Directive 2006/42/EC
- Regulation EU 2016/425 (PPE)



- Supply of Machinery (Safety) Regulations 2008
- Regulation EU 2016/425 (PPE) as brought into UK law and amended

ANSI/SAIA A92.20
CAN/CSA B.354.6
AS1418:10



Introduction

Approved Model

Models approved for use build from 2003 in ANSI and CSA, market:

Z®-45/25	S®-65 TRAX
Z®-45 DC	S®-60 HF
Z®-45/25 RT	S®-65 HF
Z®-45/25J RT	S®-60 XC
Z®-45 XC	S®-65 XC
Z®-45 HF	S®-60 DC
Z®-45 FE	S®-60 FE
Z®-51/30	S®-60J
Z®-60 DC	S®-80J
Z®-60 FE	S®-80
Z®-60/34	S®-85
Z®-62/40	S®-80 XC
Z®-80/60	S®-85 XC
Z®-135/70	S®-100
ZX®-135/70	S®-105
S®-40 XC	S®-120
S®-45 XC	S®-125
S®-40 TRAX	SX™-105 XC
S®-45 TRAX	SX™-125 XC
S®-40 HF	SX™-150
S®-45 HF	SX™-180
S®-60	SX™-135 XC
S®-65	
S®-60 TRAX	

Models approved for use in Australian market:

Models	From Serial Number
S®-45 XC	
S®-65 XC	
S®-85 XC	
S®-65 TXAX	S65CXH-45001 & S65XCD-101
Z®-45 XC	
Z®-45 FE	

WARNING

Do not install a fall arrest bar assembly on any Genie boom product other than the approved models.

Introduction

Models approved for use in CE and UKCA Markets:

The EC and UKCA Type Examination certificates indicated in the "Declaration of Conformity" section in this manual refer to the installation and use of the Fall Arrest Bar on the Genie approved models listed below.

Models	Certificates	Years
Z[®]-45/25, Z[®]-45/25J, Z[®]-45/25 RT, Z[®]-45/25J RT	EC Certificates	Years
	04 205-3348/98	1999 - 2004
	CE6/13332/PAC	2003 - 2008
	CE10/13463/PAC	2009 - 2014
	CE15/13612/PAC	2015 - 2020
	KCEC4502 Rev4	2020 - 2025
	UKCA Certificates	Years
	AVUK4502	2021 - 2025
Z[®]-45 XC	EC Certificates	Years
	CE15/13712/PAC	2017 - 2022
	KCEC4519 Rev4	2020 - 2022
	UKCA Certificates	Years
	AVUK4519	2021 - 2022
Z[®]-45 DC Z[®]-45 FE	EC Certificates	Years
	KCEC4345 Rev3	2020 - 2025
	UKCA Certificates	Years
	AVUK4345	2021 - 2025
Z[®]-51/30J RT	EC Certificates	Years
	CE6/13399/PAC	2005 - 2010
	CE10/13466/PAC	2009 - 2014
	CE15/13611/PAC	2015 - 2020
	KCEC4501 Rev4	2020 - 2025
	UKCA Certificates	Years
	AVUK4501	2021 - 2025

Models	Certificates	Years
Z[®]-60/34	EC Certificates	Years
	CE6/13331/PAC	2003 - 2008
	CE10/13473/PAC	2009 - 2014
Z[®]-60 DC, Z[®]-60 FE	EC Certificates	Years
	CE15/13689/PAC	2016 - 2021
	KCEC4514	2020 - 2026
	UKCA Certificates	Years
	AVUK4514	2021 - 2026
Z[®]-62/40	EC Certificates	Years
	CE15/13602/PAC	2014 - 2019
	KCEC4492 Rev3	2020 - 2024
	UKCA Certificates	Years
	AVUK4492	2021 - 2024
Z[®]-80/60	EC Certificates	Years
	CE6/13330/PAC	2004 - 2009
	CE10/13515/PAC	2010 - 2015
	CE15/13618/PAC	2015 - 2020
	KCEC4507	2020 - 2025
	UKCA Certificates	Years
	AVUK4507	2021 - 2025
Z[®]-135/70	EC Certificates	Years
	CE6/13378/PAC	2005 - 2010
	CE10/13513/PAC	2010 - 2015
ZX[®]-135/70	EC Certificates	Years
	CE15/13620/PAC	2015 - 2020
	KCEC4509 Rev5	2022 - 2025
	UKCA Certificates	Years
	AVUK4509	2021 - 2025

Introduction

Models	Certificates	Years
S[®]-40, S[®]-45	EC Certificates	Years
	CE6/13328/PAC	2003 - 2009
	CE6/13329/PAC	2003 - 2009
	CE10/13474/PAC	2009 - 2014
	CE15/13603/PAC	2014 - 2019
	KCEC4493	2020 - 2024
S[®]-40 XC, S[®]-45 XC	EC Certificates	Years
	CE15/13734/PAC	2019 - 2024
	KCEC4523	2020 - 2024
	UKCA Certificates	Years
	AVUK4523	2021 - 2024
S[®]-40 TRAX, S[®]-45 TRAX, S[®]-40 HF, S[®]-45 HF	EC Certificates	Years
	CE15/13734/PAC	2019 - 2024
	KCEC4523	2020 - 2024
	UKCA Certificates	Years
	AVUK4523	2021 - 2024
S[®]-60, S[®]-65	EC Certificates	Years
	CE6/13320/PAC	2003 - 2008
	CE10/13461/PAC	2009 - 2014
	CE10/13461/PAC	2014 - 2015
	CE15/13613/PAC	2015 - 2020
	KCEC4503 Rev1	2020 - 2025
S[®]-60 TRAX, S[®]-65 TRAX, S[®]-60 HF, S[®]-65 HF	EC Certificates	Years
	KCEC4521	2020 - 2023
	KCEC4503 Rev1	2020 - 2025
S[®]-65 XC	EC Certificates	Years
	CE15/13725/PAC	2018 - 2023
	KCEC4521	2020 - 2023
	UKCA Certificates	Years
	AVUK4521	2021 - 2023
	AVUK4521	2021 - 2023

Models	Certificates	Years
S[®]-60 DC, S[®]-60 FE	EC Certificates	Years
	KCEC4716	2021-2026
	UKCA Certificates	Years
	AVUK4716	2021 - 2026
S[®]-60J	EC Certificates	Years
	KCEC4373 Rev4	2020 - 2025
	UKCA Certificates	Years
	AVUK4373	2021 - 2025
S[®]-80J	EC Certificates	Years
	KCEC4385 Rev1	2021 - 2026
	UKCA Certificates	Years
	AVUK4385	2021 - 2026
S[®]-80, S[®]-85	EC Certificates	Years
	CE6/13327/PAC	2003 - 2008
	CE6/13446/PAC	2009 - 2014
	CE10/13512/PAC	2010 - 2015
	CE15/13607/PAC	2014 - 2019
S[®]-80 XC, S[®]-85 XC	EC Certificates	Years
	CE15/13717/PAC	2017 - 2022
	KCEC4520 Rev5	2020 - 2022
	UKCA Certificates	Years
	AVUK4520	2021 - 2022
S[®]-100, S[®]-105	EC Certificates	Years
	04 205-1076/00-TUV	2001 - 2006
	CE6/13326/PAC	2003 - 2008
	CE10/13518/PAC	2010 - 2015
	CE15/13619/PAC	2015 - 2020
	KCEC4508	2020 - 2025

Introduction

Models	Certificates	Years
S[®]-120, S[®]-125	EC Certificates	Years
	04 205-793/00-TUV	2001 - 2006
	CE6/13326/PAC	2003 - 2008
	CE10/13518/PAC	2010 - 2015
	CE15/13619/PAC	2015 - 2020
	KCEC4508	2020 - 2025
SX[™]-105 XC, SX[™]-125 XC	EC Certificates	Years
	CE15/13705/PAC	2016 - 2021
	KCEC4516	2021 - 2026
	UKCA Certificates	Years
	AVUK4516	2021 - 2026
SX[™]-135 XC	EC Certificates	Years
	CE15/13704/PAC	2016 - 2021
	KCEC4515	2020 - 2021
SX[™]-150	EC Certificates	Years
	CE15/13669/PAC	2015 - 2020
	KCEC4512 Rev3	2020 - 2025
	UKCA Certificates	Years
	AVUK4512	2021 - 2025
SX[™]-180	EC Certificates	Years
	CE10/13597/PAC	2014 - 2015
	CE15/13617/PAC	2015 - 2020
	KCEC4506 Rev3	2020 - 2025
	UKCA Certificates	Years
	AVUK4506	2021 - 2025

The installation and use of the Fall Arrest Bar on the Genie approved models listed below is covered by the models' EC and UKCA type examinations.

The product Declaration of Conformities for these CE and UKCA approved models are included in the original documentation package, shipped with the machine.

Models	Certificates
Z[®]-45 XC	EC Certificates
	01/205/1005/23
	UKCA Certificates
Z[®]-51/30J RT	01/205U/1005/23
	EC Certificates
	01/205/1006/23
	UKCA Certificates
	01/205U/1005/23

Introduction

Genie Self-propelled Boom Products and Fall Arrest Guidance

Background

Booms are designed to carry personnel to elevated work locations. A personal fall protection system in addition to the platform guard rails is required by regulatory agencies in many parts of the world. Personal fall protection can consist of a fall restraint and/or fall arrest system. Depending on the work being performed either a fall restraint system or a fall arrest system should be selected while in the platform. Sometimes work must be performed by stepping out of the basket onto an adjacent structure. If the adjacent structure is not equipped to provide appropriate fall protection, the Genie boom may be used as a fall arrest anchor.

This document provides guidance for the use of Genie Booms to serve as fall arrest anchorages.

Definitions

Qualified person

A "qualified person" one who, by possession of a recognized degree, certificate, or professional standing, or by extensive knowledge, training and experience, has demonstrated his/her ability to solve or resolve problems related to the subject matter, the work, or the project.

Fall Restraint Systems

Restraint systems prevent a worker from being exposed to a fall. If the employee is protected by a restraint system, either a body belt or a harness may be used. When a restraint system is used for fall protection in a boom supported aerial work platform, the employer/user/operator must ensure that the lanyard and anchor are arranged so that the operator is not exposed to falling any distance outside the platform.

Fall Arrest Systems

A system that permits an arrested fall is considered a fall arrest system. A body belt is prohibited in a fall arrest system and instead a full body harness and lanyard that limits the fall distance and arresting force on the person is required. Fall arresting lanyards typically have a shock absorbing section or are a self-retracting lifeline/lanyard.

Self-retracting lifeline/lanyard

A deceleration device containing a drum-wound line which can be slowly extracted from, or retracted onto, the drum under slight tension during normal employee movement, and which after onset of a fall, automatically locks the drum and arrests the fall. The use of the self-retracting lifeline/ lanyard as a fall arrest lanyard is allowed on boom-supported aerial work platforms. If a self-retracting lifeline/lanyard is used while exiting the platform it shall not allow a free fall greater than six feet.

Introduction

Personal Fall Protection Preference

When designing a work space/condition the order of preference for fall protection is:

- 1 Fall restraint - Prevent the occurrence of a fall
- 2 Fall arrest - Reduce injuries occurring during the fall

Genie Self-propelled Booms may be used as a fall arrest anchor including working outside of the platform under the following guidelines:

- 1 The owner/employer/user/operator of the boom is responsible for providing fall protection for boom operator.
- 2 A "qualified person" with knowledge of fall protection regulations and systems must design the work space and the fall arrest system to insure worker safety.
- 3 Genie Booms have been stability tested on level ground for a 300 lb / 136 kg person experiencing fall arrest with the remaining rated load in the platform. Therefore the weight of the worker, including tools and equipment, exiting the platform while attached to one of the platform's lanyard anchorages must not exceed 300 lbs / 136 kg.
- 4 The anchor device is used as part of a fall arrest system, the user shall be equipped with a means of limiting to a maximum arresting force of 1,349 lbs / 6 kN, in some global regions the maximum could be 1,798 lbs / 8 kN. Obey all local and governmental regulations.
- 5 The fall arrest system must not allow a potential free fall greater than 6ft / 1.8m, in some global regions this could be 6.6ft/2m. Obey all local and governmental regulations.
- 6 Only one person may exit or work outside the platform while attached to an approved lanyard attachment point.
- 7 The weight of a person working outside the platform while attached to an approved lanyard attachment point must be included in the platform load calculation.
- 8 Employers and operators must be aware of and plan for potential vertical and horizontal platform movement while exiting or entering an elevated boom platform.
- 9 The boom must be on firm level ground to be considered usable as a fall arrest anchorage.
- 10 A person trained in the operation of the Genie boom shall remain on the ground near the machine base controls to prevent unauthorized use and to prevent the machine from being operated while used as a fall arrest anchor.
- 11 The fall protection system must comply with all applicable local, provincial, federal, job site, and manufacturer's requirements for the use of personal fall protection equipment.
- 12 Do not operate the boom once the operator has tied off and stepped out of the platform.
- 13 Be aware of all medical conditions that could affect the safety of the user in normal and emergency use.
- 14 A rescue plan shall be in place to deal with any emergencies that may arise during the work at height.

Introduction

- 15 No alterations, additional or repairs shall be made to this equipment without the written consent of Genie.
- 16 The equipment shall not be used outside its limitations, or for any other purpose than that it is intended for.
- 17 Always check within a system to ensure compatibility of items of equipment when assembled into a system before use.
- 18 The safety function of one item of equipment may interfere with the safe function of another with certain combinations of equipment.
- 19 The equipment shall be stored and transported in the following manner:
 - To prevent contact with sharp heavy objects that may damage the track.
 - Away from harmful substances such as acids, alkalis, fuel, and paints that could cause damage.
 - The equipment is completely installed as described in the installation instructions within this manual.
- 20 For equipment intended for use in fall arrest system it is essential for safety that the anchor device/point shall always be positioned, and the work carried out in such a way considering the following:
 - Potential fall and free fall distance
 - Maximum allowable deceleration distance
 - Maximum lock-up length (for the self retracting lifeline/lanyard only)
 - Any stretch in the lifeline or lanyard outside of the deceleration distance.
 - The height of the operator
 - Any harness effects including self retracting lanyards
 - Safety factor (a suitable amount to ensure that the required clearance between the operator and the lower surface is met)
 - Any movement of the platform due to dynamic loading
 - Any obstructions under the platform
 - Any other traffic or distractions that could affect safety
- 21 The anchor device shall only be used for personal fall protection equipment and not used in any way for lifting/lowering equipment.

Introduction

Owner/Employer/User/Operator Requirements:

- 1 Operators must be trained and qualified on safe operation of the equipment, and be familiar with the specific model of Genie equipment as follows:
 - Be familiar and comply with the equipment operating and safety manuals, decals and warnings.
 - Understand all control functions.
 - Be aware of and understand all safety devices specific to the equipment being used.
 - Be instructed how to avoid the hazards.
- 2 Comply with all applicable jobsite, local, state, provincial, and federal rules and regulations, and standards related to the use of the equipment.
- 3 The equipment must be in proper working condition and configuration.

In consideration for Genie's guidance herein, the equipment owner, employer, user and operator hereby agree to indemnify and hold harmless Terex USA, Terex TGG and its parent and affiliated companies against any and all liabilities, claims, suits, losses, costs and legal fees caused by, arising out of, or resulting from any negligent act or omission in the operation of the equipment; the failure to comply with the criteria set forth in this manual related to the use of a boom as a Fall Arrest anchorage; the safety rules and operating instructions in the Operator's Manual. **By proceeding with the use of a boom as a Fall Arrest anchorage, you agree to adhere to the requirements set forth herein, including said indemnification. If you do not agree, do not proceed with the proposed use.**

Introduction



Danger

Failure to obey the instructions and safety rules in this manual and in the operator's manual for this machine will result in death or serious injury.

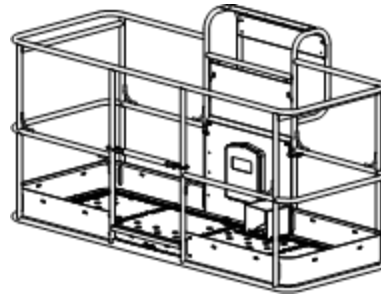
Note

The Genie® Fall Arrest Bar, also known as the Traveling Fall Arrest Anchor System (TFAAS), is only authorized for use in the ANSI, CSA, CE, UK and AUS markets. All other markets are prohibited from use.

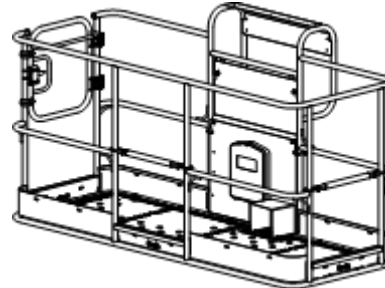
Authorized Platform Configurations:

The Genie Fall Arrest Bar shall only be used on Genie Booms equipped with the following 6 ft / 1.83 m or 8 ft / 2.44 m platforms:

- ▲ Standard entry platforms on booms manufactured from January, 2003



- ▲ Side entry swing gate platforms manufactured from August, 2015



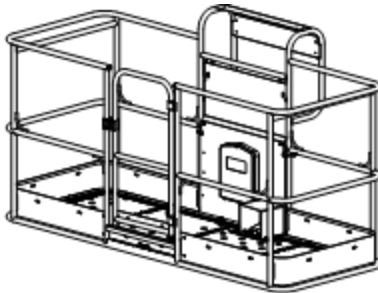
Use on all other machines is prohibited.

Introduction

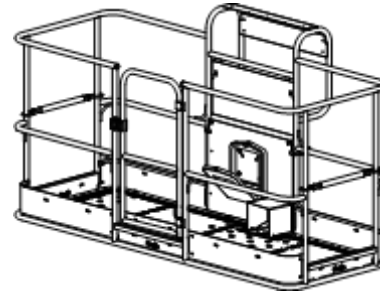
Non-Authorized Platform Configurations:

The Genie Fall Arrest Bar shall not be used with machines equipped with the following:

- ▲ Panel cradle option
- ▲ Center mounted swing gate option
- ▲ Lift Tools™ Expo Installer



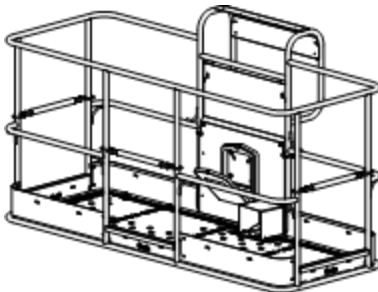
- ▲ Tri-entry platform with two sliding mid-rails and center mounted swing gate



▲ DANGER

Using the Genie Fall Arrest Bar with the above options could result in death or serious injury.

- ▲ Tri-entry platform with three sliding mid-rails



Introduction

▲ Genie Fall Arrest Bar Safety

Read, understand and obey all warnings and instructions provided with the Genie Fall Arrest Bar.

Do not exceed the rated platform capacity. The weight of the Genie Fall Arrest Bar assembly will reduce the rated platform capacity and must be subtracted from the total platform load.

The Genie Fall Arrest Bar is a non-integrated accessory. The weight of this Genie Fall Arrest Bar (50 lbs/ 23 kg) is to be subtracted from the machine rated capacity.

The Genie Fall Arrest Bar is to be removed prior to calibrating load sense systems.

Be sure the Genie Fall Arrest Bar is securely installed.

When the Genie Fall Arrest Bar structure is attached, this manual should be considered a permanent part of your machine and should remain with the machine at all times.

The anchor device is for the use of one person only.

Symbol and Hazard Pictorials Definitions



Genie Fall Arrest Bar weighs
50 lbs / 23 kg



Read the supplement,
part number 1256390.



Tip-over Hazard



Lanyard anchorage
points



Fall arrest

Introduction

Pre-operation Inspection

- ☐ Be sure that the operator's manual, safety manual, responsibilities manual and any necessary supplements are complete, legible and in the storage container located in the platform.
- ☐ Be sure that all decals are legible and in place.

Check the Genie Fall Arrest Bar for damage or wear, improperly installed, loose or missing parts and unauthorized modifications.

- ☐ Nuts, bolts and other fasteners
- ☐ Cracks in welds or structural components
- ☐ Dents or damage to Genie Fall Arrest Bar
- ☐ Verify that the lanyard attachment trolley can move freely along the entire length of the track

The pre-operation inspection is a visual inspection performed by the operator prior to each work shift. The inspection is designed to discover if anything is apparently wrong with a machine before the operator performs the function tests.

If damage or any unauthorized variation from factory delivered condition is discovered, the machine must be tagged and removed from service and not used again until confirmed in writing by a competent person that it is acceptable to do so.

Decal Inspection

Use the appropriate inspection to verify that all decals are legible and in place. Decals may vary depending on machine configuration.

Part No.	Decal Description	Qty
1281176	Label – Lanyard Anchorage Point, Fall Arrest	1
1256400	Decal, TFAAS Track, Word	1
1260910	Decal, TFAAS Track, Symbol	1
1301770	Label – CE Identification, TFAAS	1

Introduction

Annual Inspection

Inspect for missing or loose components.

Check all fasteners for proper torque. Refer to the installation instructions section of this document for the torque specifications.

Inspect all components for damage or wear. Check for cracks, bends and corrosion.

Inspect all welds for cracks.

Inspect the lower track flanges. If the flanges are bent, damaged or worn, replace the track.

Verify the lanyard attachment trolley can freely move the entire length of the track.

Test the operation of the lanyard attachment eye on the trolley and verify that it can rotate freely.

Test the operation of the lanyard attachment trolley and verify the wheels rotate freely.

Verify the track end stops and hardware are present and secure.

Inspection After a Fall

Note: In the event of an operator fall, the Genie Fall Arrest Bar and the Genie boom must be immediately removed from service and inspected by a "qualified person". If the Genie Fall Arrest Bar and the Genie boom pass the inspections listed below, the Genie Fall Arrest Bar and the Genie boom may be returned to service.

Inspect all structural components of the Genie Fall Arrest Bar and the Genie boom. Replace any bent or damaged components. Replace any components with cracked welds. Replace all mounting fasteners for the Genie Fall Arrest Bar.

Perform an Annual Inspection on the Genie Fall Arrest Bar.

Perform a Pre-Operation Inspection on both the Genie Fall Arrest Bar and the Genie boom.

Introduction

Lifespan of Product

PPE such as Genie Fall Arrest Bar can be used, provided that from the date of manufacture they are subject to:

- Normal use in accordance with the recommendations of use of this manual.
- Periodic inspection, which must be performed at least once a year by an authorized and competent person (local and governmental regulation on periodic inspections may differ: check and obey them). At the end of this periodic inspection, the PPE must be declared fit to return to service in writing. Please refer to the Genie Fall Arrest Bar Inspection Log contained in this manual.
- Strict compliance with storage and transport conditions specified in this manual.

Installation Instructions



Observe and Obey::

- ☑ This procedure shall be completed by a person authorized to install the Genie Fall Arrest Bar.
- ☑ Immediately tag and remove from service a damaged or malfunctioning machine.
- ☑ Repair any machine damage or malfunction before operating the machine.

Before Starting Installation

- ☑ Read, understand and obey the safety rules and operating instructions in the appropriate Genie Operator's Manual and Supplements.
- ☑ Be sure that all necessary tools and parts are available and ready for use.
- ☑ Read this procedure completely and adhere to the instructions. Attempting shortcuts may produce hazardous conditions.
- ☑ Be sure the MEWP platform has no damage, weld cracks or degradation.

Notes:

- New mounting hardware must be used with each new installation of the Genie Fall Arrest Bar, including re-installation on the same machine. A replacement hardware kit (Genie part number 1260849) is available through the Genie Parts Department.
- Refer to the illustration page for installation instructions.

Contents of Kit 1256377

For use with 8 ft / 2.44 m platforms with word decals.

Item	Part Description	Genie part number	Qty.
1	Track assembly, 8 ft / 2.44 m	*1256379	1
2	Spacer	1256481	8
3	Inner hanger	1256389	2
4	Screw, 3/8-16 x 2.5 **	1256856	8
5	Flange nut, 3/8-16 **	1274322	8
6	Manual, Supplement	1256390	1

Components of *1256379

Item	Part Description	Genie part number	Qty.
7	Trolley	1256439	1
8	Decal, Lanyard Attachment	1281176	1
9	Decal, TFAAS Track, Word	1256400	1
10	Screw, 1/2-13 x 3.5 ***	1256851	2
11	Flange nut, 1/2-13 ***	1251997	2
12	Rubber bumper	36388	2
13	End stop	1260892	2
14	Weldment, 8 ft / 2.44 m track	1256381	1

** Torque to 44 ft-lbs / 60 Nm

*** Tighten until snug. Do not over tighten or the track may be damaged.

Installation Instructions

Contents of Kit 1256378

For use with 6 ft / 1.83 m platforms with word decals.

Item	Part Description	Genie part number	Qty.
1	Track assembly, 6 ft / 1.83 m	*1256380	1
2	Spacer	1256481	8
3	Inner hanger	1256389	2
4	Screw, 3/8-16 x 2.5 **	1256856	8
5	Flange nut, 3/8-16 **	1274322	8
6	Manual, Supplement	1256390	1

Components of *1256380

Item	Part Description	Genie part number	Qty.
7	Trolley	1256439	1
8	Decal, Lanyard Attachment	1281176	1
9	Decal, TFAAS Track, Word	1256400	1
10	Screw, 1/2-13 x 3.5 ***	1256851	2
11	Flange nut, 1/2-13 ***	1251997	2
12	Rubber bumper	36388	2
13	End stop	1260892	2
14	Weldment, 6 ft / 1.83 m track	1256383	1

Contents of Kit 1261018

For use with 8 ft / 2.44 m platforms with French Decals.

Item	Part Description	Genie part number	Qty.
1	Track assembly, 8 ft / 2.44 m	*1261020	1
2	Spacer	1256481	8
3	Inner hanger	1256389	2
4	Screw,, 3/8-16 x 2.5 **	1256856	8
5	Flange nut, 3/8-16 **	1274322	8
6	Manual, Supplement	1256390FR	1

Components of *1261020

Item	Part Description	Genie part number	Qty.
7	Trolley	1256439	1
8	Decal, Lanyard attachment	1281176	1
9	Decal, TFAAS Track, French	1256400FR	1
10	Screw, 1/2-13 x 3.5 ***	1256851	2
11	Flange nut, 1/2-13 ***	1251997	2
12	Rubber bumper	36388	2
13	End stop	1260892	2
14	Weldment, 8 ft / 2.44 m track	1256381	1

** Torque to 44 ft-lbs / 60 Nm

*** Tighten until snug. Do not over tighten or the track may be damaged.

Installation Instructions

Contents of Kit 1261019

For use with 6 ft / 1.83 m platforms with French Decals.

Item	Part Description	Genie part number	Qty.
1	Track assembly, 6 ft / 1.83 m	*1261021	1
2	Spacer	1256481	8
3	Inner hanger	1256389	2
4	Screw, 3/8-16 x 2.5 **	1256856	8
5	Flange nut, 3/8-16 **	1274322	8
6	Manual, Supplement	1256390FR	1

Components of *1261021

Item	Part Description	Genie part number	Qty.
7	Trolley	1256439	1
8	Decal, Lanyard Attachment	1281176	1
9	Decal, TFAAS Track, French	1256400FR	1
10	Screw, 1/2-13 x 3.5 ***	1256851	2
11	Flange nut, 1/2-13 ***	1251997	2
12	Rubber bumper	36388	2
13	End stop	1260892	2
14	Weldment, 6 ft / 1.83 m track	1256383	1

Contents of Kit 1261022

For use with 8 ft / 2.44 m platforms with symbol Decals.

Item	Part Description	Genie part number	Qty.
1	Track assembly, 8 ft / 2.44 m	1261024	1
2	Spacer	1256481	8
3	Inner hanger	1256389	2
4	Screw, 3/8-16 x 2.5 **	1256856	8
5	Flange nut, 3/8-16 **	1274322	8
6	Manual, Supplement	1256390	1

Components of *1261024

Item	Part Description	Genie part number	Qty.
7	Trolley	1292983	1
8	Decal, Lanyard Attachment	1281176	1
9	Decal, TFAAS Track, Symbol	1260910	1
10	Screw, 1/2-13 x 3.5 ***	1256851	2
11	Flange nut, 1/2-13 ***	1251997	2
12	Rubber bumper	36388	2
13	End stop	1260892	2
14	Weldment, 8 ft / 2.44 m track	1256381	1
15	Decal, CE Identification	1301770	1

** Torque to 44 ft-lbs / 60 Nm

*** Tighten until snug. Do not over tighten or the track may be damaged.

Installation Instructions

Contents of Kit 1261023

For use with 6 ft / 1.83 m platforms with symbol Decals.

Item	Part Description	Genie part number	Qty.
1	Track assembly, 6 ft / 1.83 m	*1261025	1
2	Spacer	1256481	8
3	Inner hanger	1256389	2
4	Screw, 3/8-16 x 2.5 **	1256856	8
5	Flange nut, 3/8-16 **	1274322	8
6	Manual, Supplement	1256390	1

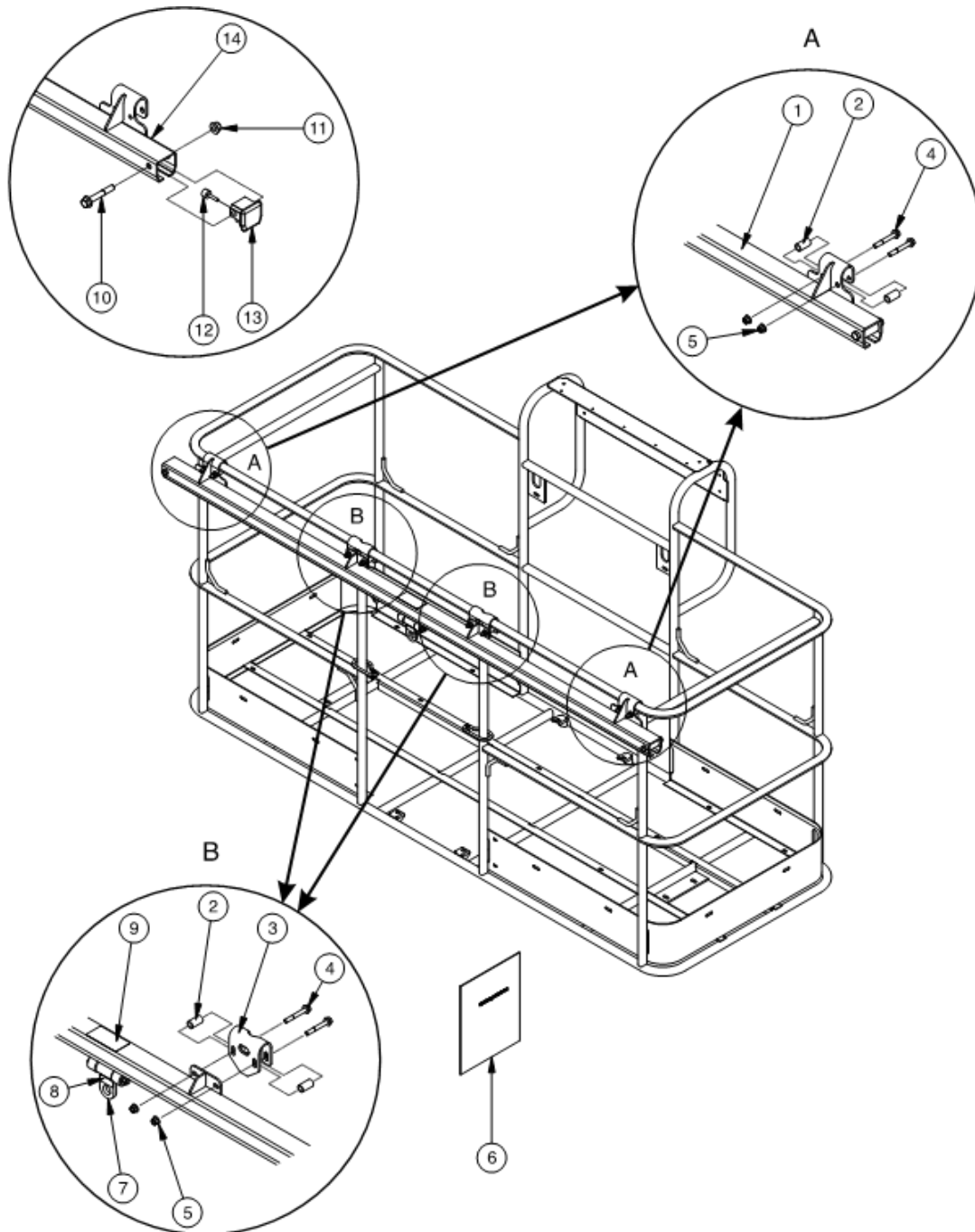
Components of *1261025

Item	Part Description	Genie part number	Qty.
7	Trolley	1292983	1
8	Decal, Lanyard Attachment	1281176	1
9	Decal, TFAAS Track, Symbol	1260910	1
10	Screw, 1/2-13 x 3.5 ***	1256851	2
11	Flange nut, 1/2-13 ***	1251997	2
12	Rubber bumper	36388	2
13	End stop	1260892	2
14	Weldment, 6 ft / 1.83 m track	1256383	1
15	Decal, CE Identification	1301770	1

** Torque to 44 ft-lbs / 60 Nm

*** Tighten until snug. Do not over tighten or the track may be damaged.

Installation Instructions



[illegible]

Declaration of Conformity



EC/EU Declaration of Conformity

Model / Type: Genie Fall Arrest Bar (FAB and TFAAS)
Description: - Category 3 Personal Protective Equipment (according to Regulation (EU) 2016/425)
Manufacturer: Terex Global GmbH
Bleicheplatz 2
8200 Schaffhausen Switzerland

This declaration of conformity is issued under the sole responsibility of the manufacturer.

Object of the declaration: Part number 1261023 and 1261022

The object of the declaration described above is in conformity with the relevant Union harmonisation legislation:

Regulation (EU) 2016/425 as described in EU type examination number 2777/13224-02/E00-00 issued by:
SATRA Technology Europe Limited
N° 2777 Bracetown Business Park,
Clonee, Dublin 15
Dublin, Ireland

Technical standards or specifications used:

EN 795:2012 Personal fall protection equipment - Anchor devices

The object of the declaration described above is subject to the following conformity assessment procedure according to Regulation (EU) 2016/425:

Conformity to type based on internal production control plus supervised product checks at random intervals (Module C2) under surveillance of the notified body SATRA N°2777

Signed for and on behalf of:

Terex Global GmbH

Place and date of issue:

Place: Switzerland

Date: 16 August 2019

Empowered signatory

Authorized representative to compile the technical file:

Tony Green
Managing Director
Genie Industries B.V.
Boekerman 5
OUD GASTEL, Brabant 4751 XK
The Netherlands



Declaration of Conformity



UK Declaration of Conformity

Model / Type: Genie Fall Arrest Bar (FAB and TFAAS)
Description: - Category 3 Personal Protective Equipment
Manufacturer: Terex Global GmbH
Bleicheplatz 2
8200 Schaffhausen Switzerland

This declaration of conformity is issued under the sole responsibility of the manufacturer.

Object of the declaration: Part number 1261023 and 1261022

The object of the declaration described above is in conformity with the relevant Designated legislation:

- PPE Regulation (EU) 2016/425 (as brought in UK law and amended). As described in UKCA type examination number AB0321/16357-01/E00-00 issued by:

SATRA Technology Centre Limited
N° AB0321 Wyndham Way,
Telford, Kettering Northamptonshire
NN168SD

Technical standards or specifications used:

EN 795:2012 Personal fall protection equipment - Anchor devices

The object of the declaration described above is subject to the following conformity assessment procedure according to PPE Regulation (EU) 2016/425: (as brought in UK law and amended).

Conformity to type based on internal production control plus supervised product checks at random intervals (Module C2) under surveillance of the Approved Body SATRA N°AB0321

Signed for and on behalf of:

Terex Global GmbH

Place and date of issue:

19 April 2021

Empowered signatory

Simon Meester

Authorized representative to compile the technical file: Genie UK Limited
The Maltings
Wharf Road
Grantham
NGB31 6BH
UK



Declaration of Conformity



EC/EU Declaration of Conformity

Product: Genie Booms equipped with Genie Fall Arrest Bar (FAB and TFAAS)
Product Type: Mobile Elevating Work Platform
Manufacturer: Terex Global GmbH
Bleicheplatz 2
8200 Schaffhausen Switzerland

This declaration of conformity is issued under the sole responsibility of the manufacturer.

Object of the declaration: Part number 1261023 and 1261022

The object of the declaration described above is in conformity with the relevant Union harmonisation legislation:

Machinery Directive 2006/42/EC as described in EC type examination n° DK-MAC000140 i01 issued by:

TUV SUD Demark
NB N° 2443
Strandvejen 125
DK-2900 Hellerup

Technical standards or specifications used:

EN 795:2012 Personal fall protection equipment - Anchor devices
ISO 16368:2010 MEWP design, calculations, safety requirement and methods.

Signed for and on behalf of:
Place and date of issue:

Terex Global GmbH
Place: Switzerland
Date: 20th March 2023

Empowered signatory

Authorized representative to compile the technical file:

Tony Green
Managing Director
Genie Industries B.V.
Boekerman 5
OUD GASTEL, Brabant 4751 XK
The Netherlands



Declaration of Conformity



UK Declaration of Conformity

Product: Genie Booms equipped with Genie Fall Arrest Bar (FAB and TFAAS)
Product Type: Mobile Elevating Work Platform
Manufacturer: Terex Global GmbH Bleicheplatz 2
8200 Schaffhausen Switzerland

This declaration of conformity is issued under the sole responsibility of the manufacturer.

Object of the declaration: Part number 1261023 and 1261022

The object of the declaration described above is in conformity with the relevant Designated legislation:

- Supply of Machinery (Safety) Regulations 2008 as described in type examination n° UK-MAC000139 i01 issued by:

TUV SUD BABT
AB N° 0462
Octagon House
Concorde Way
Segensworth
North Hampshire
PO15 5RL

Relevant Designated standards:

EN 795:2012 Personal fall protection equipment - Anchor devices
SO 16368:2010 MEWP design, calculations, safety requirement and methods.

Signed for and on behalf of:
Place and date of issue:
Empowered signatory

Terex Global GmbH
20th March 2023

Simon Meester

Authorized representative to compile the technical file: Genie UK Limited
The Maltings
Wharf Road
Grantham
NGB31 6BH
UK



California Proposition 65



WARNING

Operating, servicing and maintaining this equipment can expose you to chemicals including engine exhaust, carbon monoxide, phthalates, and lead, which are known to the State of California to cause cancer and birth defects or other reproductive harm. These chemicals can be emitted from or contained in other various parts and systems, fluids and some component wear by-products. To minimize exposure, avoid breathing exhaust, do not idle the engine except as necessary, service your equipment and vehicle in a well-ventilated area and wear gloves or wash your hands frequently when servicing your equipment or vehicle and after operation. For more information go to www.P65Warnings.ca.gov/passenger-vehicle.

Breathing diesel engine exhaust exposes you to chemicals known to the State of California to cause cancer and birth defects or other reproductive harm.

- Always start and operate the engine in a well-ventilated area.
- If in an enclosed area, vent the exhaust to the outside.
- Do not modify or tamper with the exhaust system.
- Do not idle the engine except as necessary.

For more information go to www.P65warnings.ca.gov/diesel.